



SHOP SPACE & PAD SITES

SWQ Hwy 380
& Hardin Blvd
McKinney, TX

Metrics

SWQ Hwy 380 & Hardin Blvd
McKinney, TX 75071

Location

SWQ Hwy 380 & Hardin Blvd
McKinney, TX 75071

Available Spaces

Retail For Lease 17,500 SF	Pads For Sale or Lease Lot 2 0.98 AC
	Lot 3 0.86 AC
	Lot 4 0.98 AC



Traffic Counts

US 380 105,633 VPD	Hardin Blvd 19,167 VPD
-----------------------	---------------------------

Area Attractions



VENTURE

AMY PJETROVIC
APJETROVIC@VENTUREDFW.COM

NATALIA SINGER
NSINGER@VENTUREDFW.COM

MIA UREÑA
MURENA@VENTUREDFW.COM

Property Highlights

SWQ Hwy 380 & Hardin Blvd
McKinney, TX 75071

1. Retail shop space for lease, with pads available for sale or ground lease, located in an affluent, high-growth Hwy 380 corridor
2. Prime frontage along U.S. Highway 380 with traffic counts exceeding 105,000 VPD
3. Excellent visibility and access from Hwy 380, with median cut construction scheduled to begin in June 2026
4. Adjacent to the new JPI 32-acre multifamily development, scheduled to break ground in June 2026
5. Pad delivery anticipated Q2 2027; Shop space delivery anticipated Q4 2027

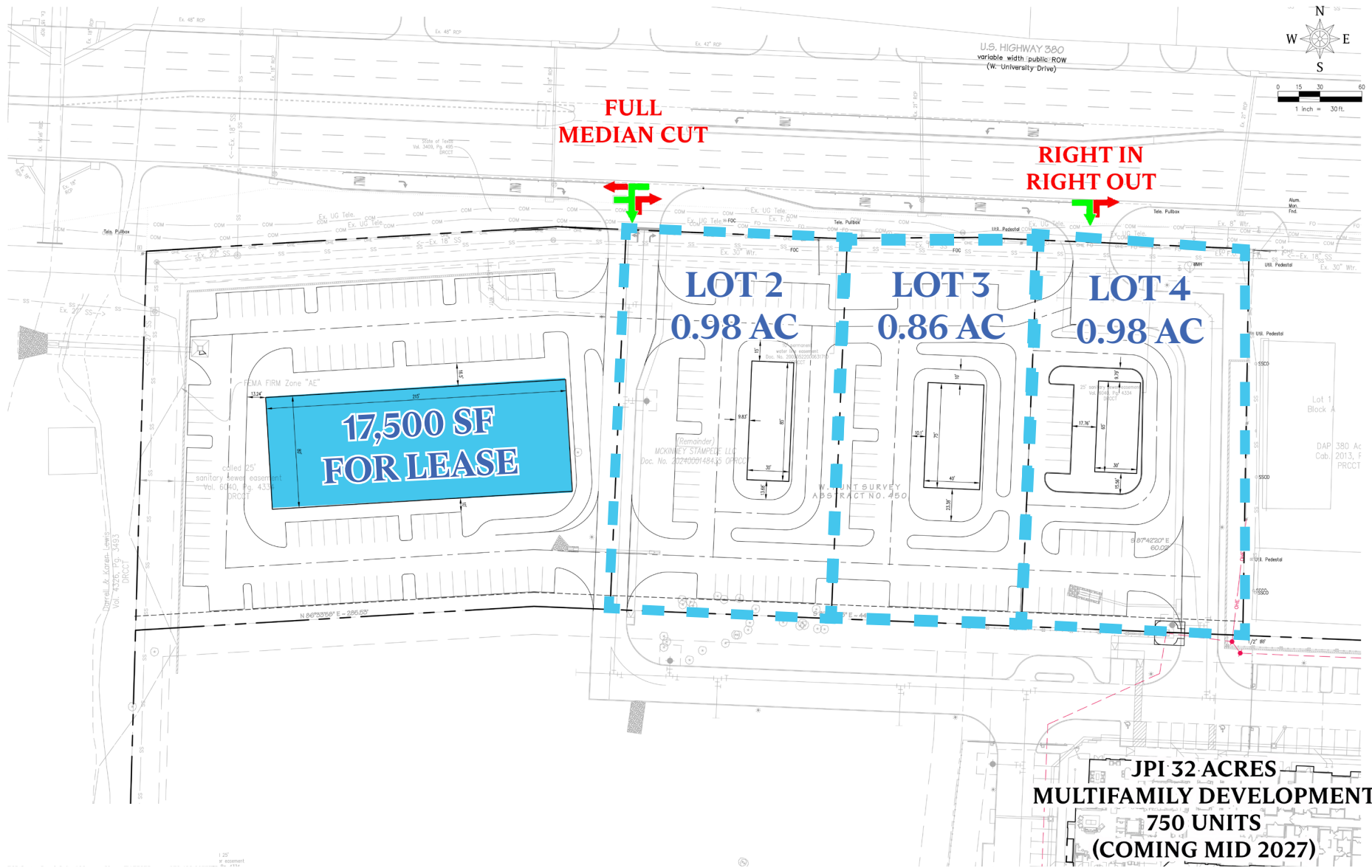


2025 Demographic Summary

	1 MILE	3 MILES	5 MILES
EST. POPULATION	8,968	76,563	180,471
EST. DAYTIME POPULATION	2,109	28,405	57,935
EST. AVG. HH INCOME	\$121,570	\$171,316	\$169,255

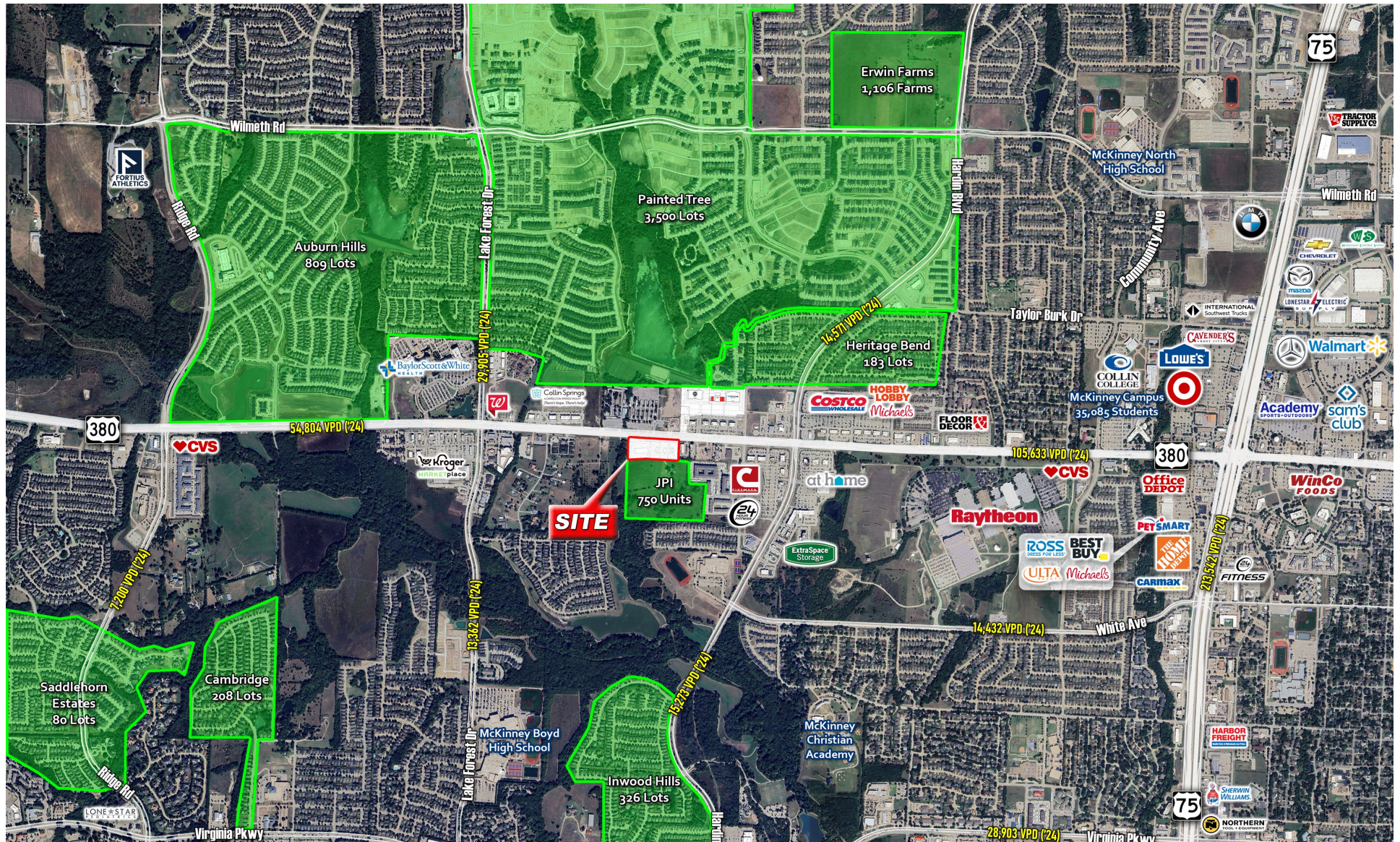
Site Plan

SWQ Hwy 380 & Hardin Blvd
McKinney, TX 75071



Far Aerial

SWQ Hwy 380 & Hardin Blvd
McKinney, TX 75071



SWQ Hwy 380 &
Hardin Blvd
McKinney, TX

Amy Pjetrovic
Principal

apjetrovic@venturedfw.com

Natalia Singer
Senior Vice President

nsinger@venturedfw.com

Mia Ureña
Transaction Manager

murena@venturedfw.com

(214) 378-1212

www.VentureDFW.com

8235 Douglas Ave
Suite 720
Dallas, Texas 75225

VENTURE

*The information contained herein was obtained from sources deemed reliable; however, Venture Commercial Real Estate, LLC, makes no guarantees, warranties or representations as to the completeness or accuracy thereof. The presentation of this property is subject to errors; omissions; change of price, prior to sale or lease; or withdrawal without notice.