

BANK OF TEXAS PAD SITE

FOR SALE OR GROUND LEASE

HURST, TEXAS

500 GRAPEVINE HWY (HWY 26)

CHRIS CORBIN

BOB MOORE



LEASING | TENANT REPRESENTATION | LAND | INVESTMENT SALES | PROPERTY MANAGEMENT

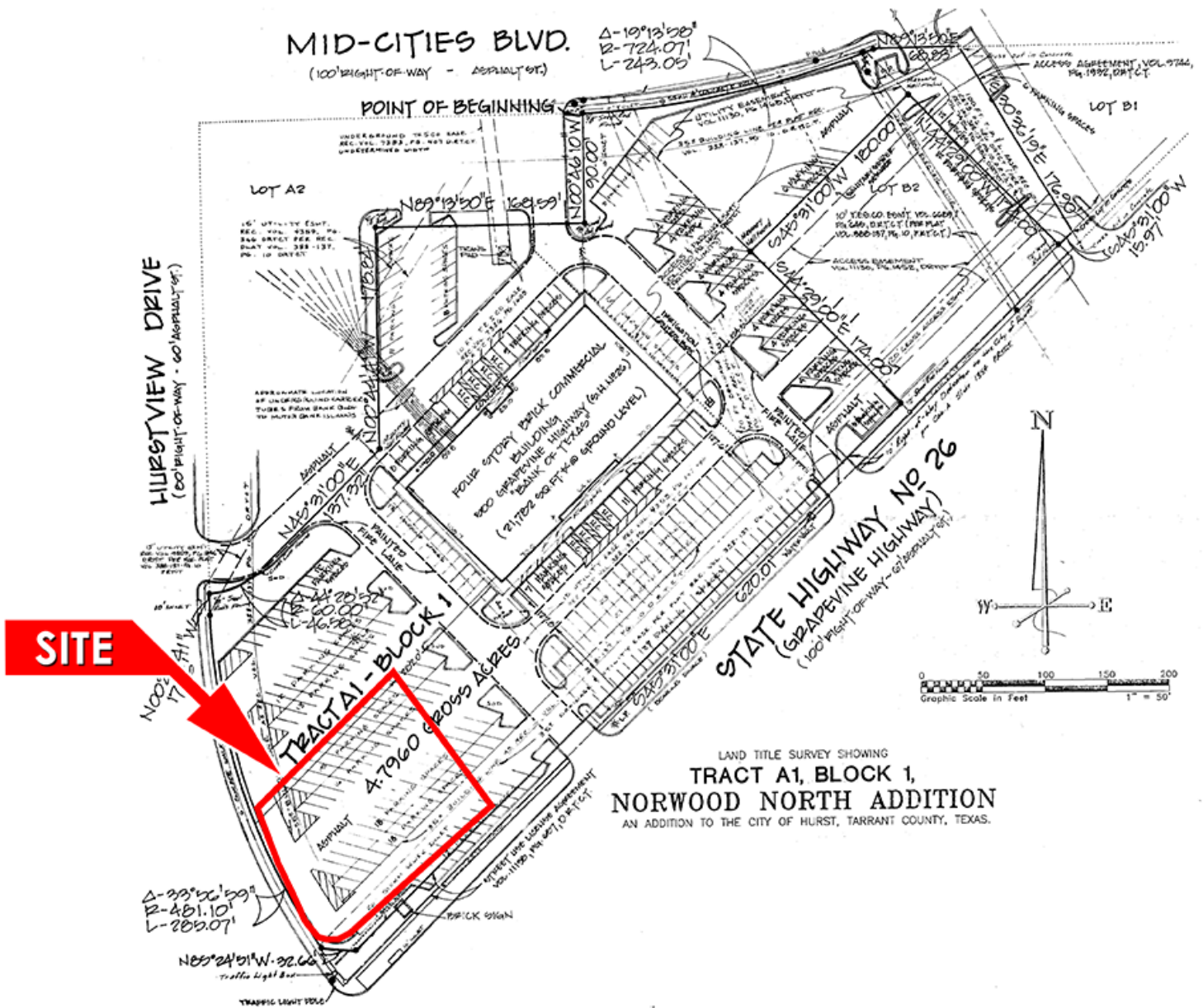


VENTURE 214.378.1212
COMMERCIAL 8235 Douglas Ave, Suite 720
Dallas, TX 75225

HWY 26 & HURSTVIEW DR

HURST, TX

BANK OF TEXAS PAD SITE



DEMOGRAPHICS	1 MILE	3 MILE	5 MILE
2015 EST POPULATION	9,399	93,906	265,813
2015 EST AVG HH INCOME	\$110,258	\$92,275	\$95,230

TRAFFIC COUNTS	
GRAPEVINE HWY	35,301 VPD
HURSTVIEW	27,668 VPD

- ### HIGHLIGHTS
- Pad Size - 35,442 SF
 - High traffic signalized intersection.
 - Drive-thru and patio available.
 - Strong daytime employment.

