

4211 GASTON AVENUE

FOR SALE & LEASE

DALLAS, TEXAS

LOCATED BETWEEN N. PEAK & N. HASKELL

MIKE SMITH

KIMBERLY SON

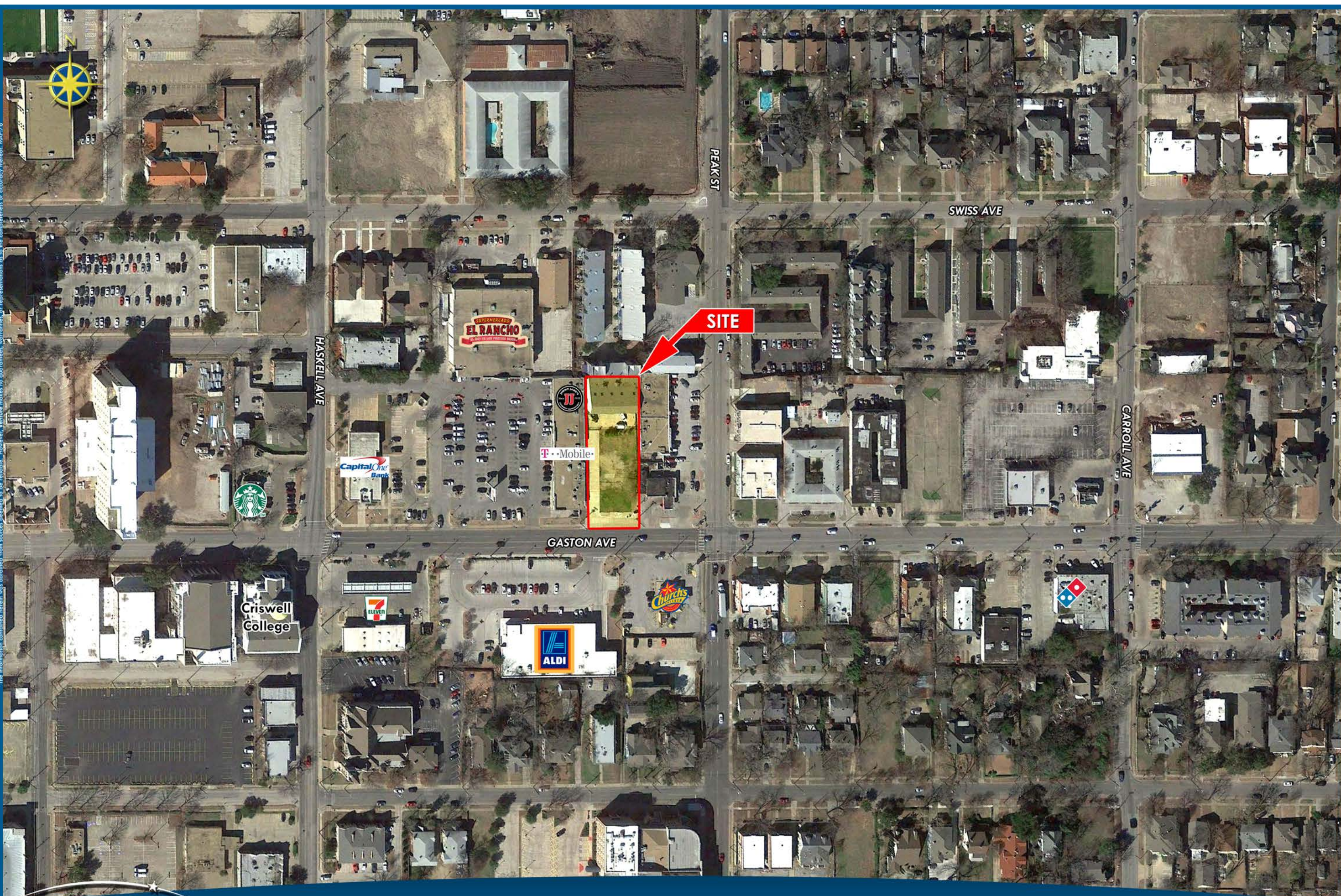


HIGHLIGHTS

- Building size: +/- 5,300 SF
- Pad site: 0.244 AC (10,368 SF)
- Total land (incl. pad site): 0.536 AC (23,356 SF)

LEASING | TENANT REPRESENTATION | LAND | INVESTMENT SALES | PROPERTY MANAGEMENT

The information contained herein was obtained from sources deemed to be reliable. However, Venture makes no guarantee, warranty, or representations as to the completeness or accuracy thereof. MAP 76

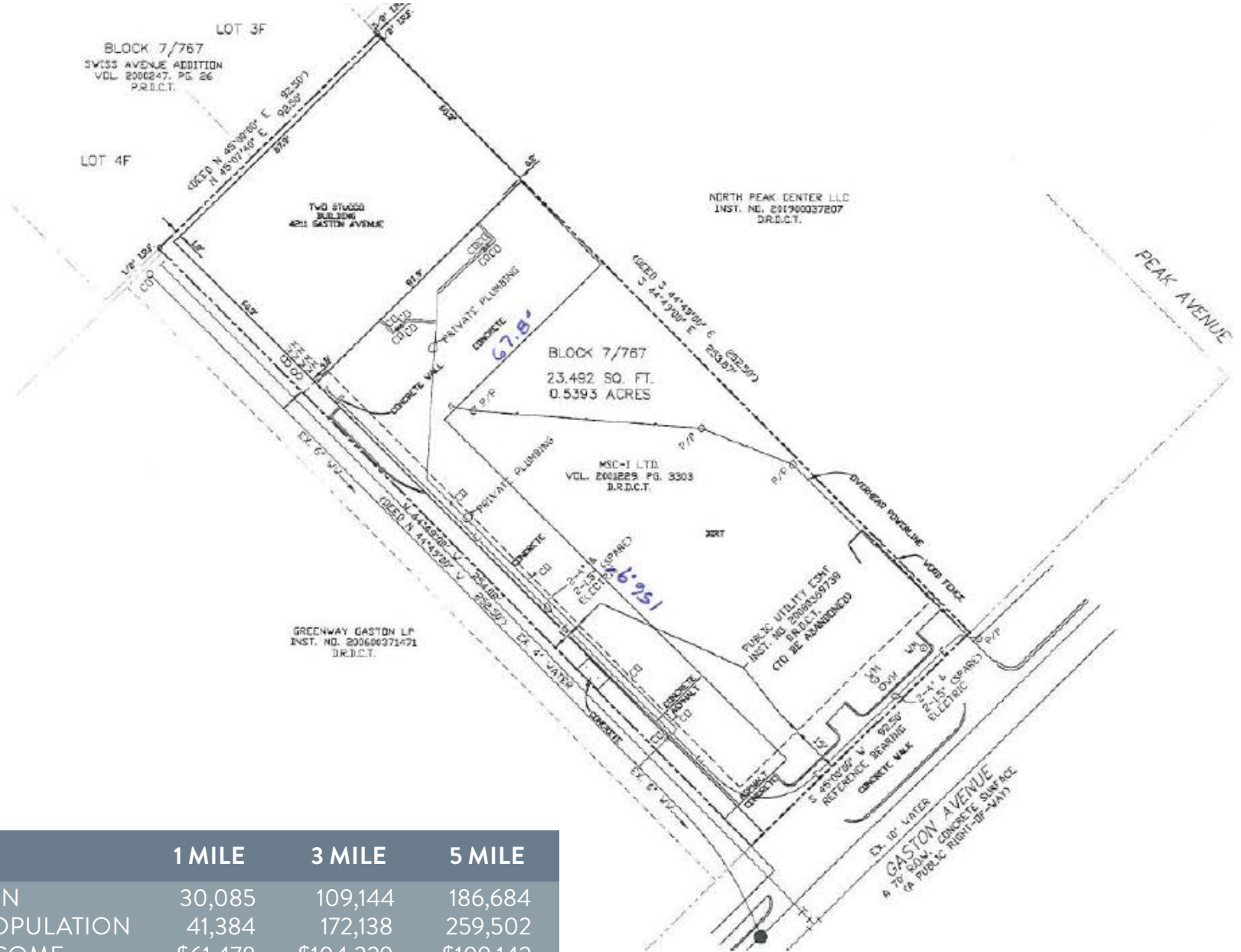


VENTURE 214.378.1212
COMMERCIAL 8235 Douglas Ave, Suite 720
Dallas, TX 75225

4211 GASTON AVE

DALLAS, TX

4211 GASTON AVENUE



DEMOGRAPHICS	1 MILE	3 MILE	5 MILE
2017 EST POPULATION	30,085	109,144	186,684
2017 EST DAYTIME POPULATION	41,384	172,138	259,502
2017 EST AVG HH INCOME	\$61,478	\$104,329	\$109,142

