

2653 COMMERCE STREET

FOR LEASE

DALLAS, TEXAS

NWC COMMERCE STREET AND PRYOR STREET

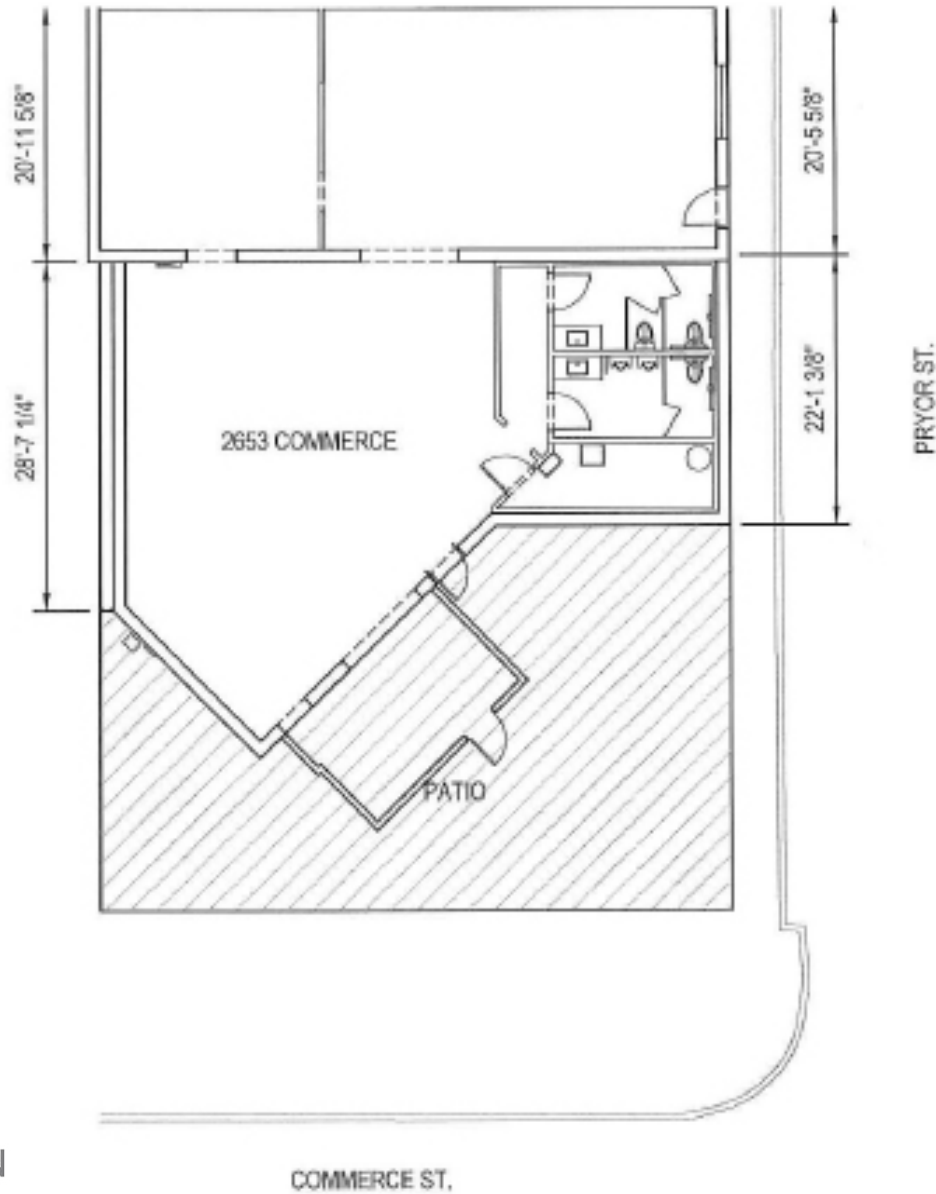
COLIN BEAMS

AMY PJETROVIC



LEASING | TENANT REPRESENTATION | LAND | INVESTMENT SALES | PROPERTY MANAGEMENT

2653 COMMERCE STREET



DOWNTOWN
DALLAS INC

DEMOGRAPHICS	1 MILE	3 MILE	5 MILE
2017 EST POPULATION	14,795	161,551	355,727
2016 EST DAYTIME POPULATION	83,880	237,135	365,015
2017 EST AVG HH INCOME	\$90,984	\$89,153	\$93,394

TRAFFIC COUNTS	
COMMERCE STREET	5,788 VPD

HIGHLIGHTS
• 2,526 SF
• 2nd Generation restaurant
• Building is unique with lots of character



8235 DOUGLAS AVE, SUITE 720
DALLAS, TEXAS 75225
214.378.1212

VENTUREDFW.COM

